

# SACRAMENTO BRUSHED NICKEL WALL MOUNT DOUBLE HANDLE BATHTUB FAUCET INSTALLATION INSTRUCTIONS



## BEFORE YOU BEGIN

Before you begin, please read the installation instructions below. Observe all local building and safety codes.

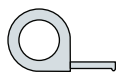
Unpack and inspect the items for any shipping damages. If you find damages, do not install.

Please note all products must be installed by a professional and certified plumber otherwise warranty might be voided.

## POSSIBLE TOOLS REQUIRED\*



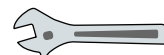
Plumbers Tape



Tape Measure



Level



Adjustable Wrench



Hex Wrench



Thread Sealant



Drill



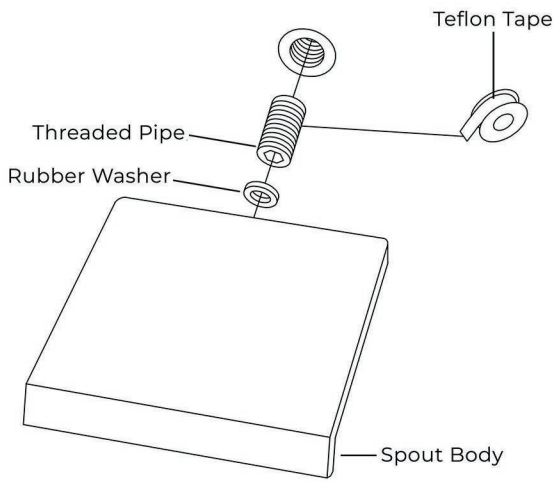
Pencil or Marker



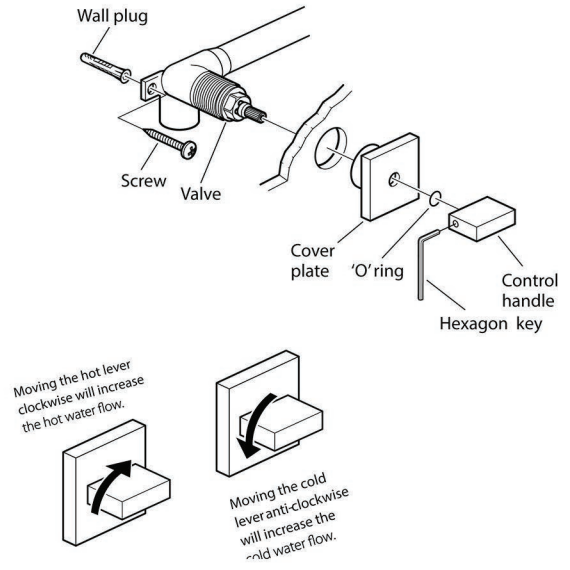
Screwdriver

\*not included

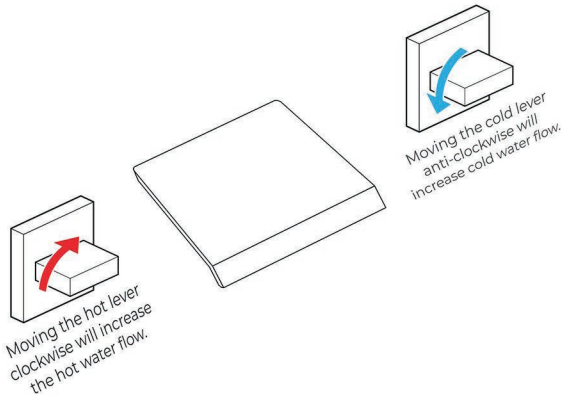
## STEP 1:



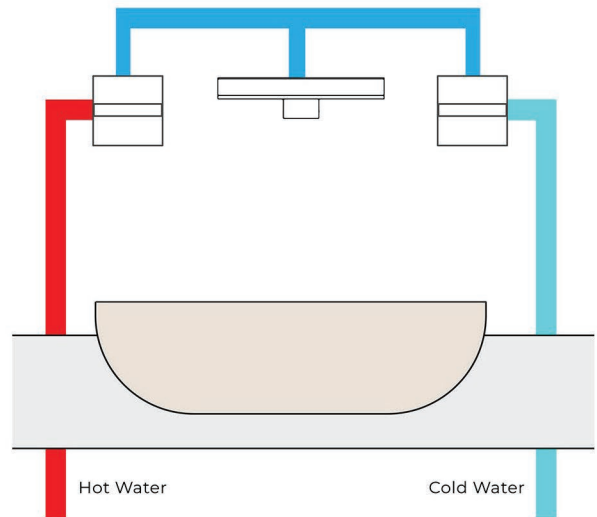
## STEP 2:



## STEP 3:



## STEP 4:



Before installing your new mixer, flush through the pipework to ensure the removal of debris, turn off the water supply.

The valve must be set into the wall.

Mark a horizontal line on the wall at the required height, mark the position of the valve and the spout, drill the holes.

Mark the position of the valve and drill 2 holes to take suitable wall plugs and screws.

Connect the water supply to the inlet pipes. The hot water should be connected to the left-hand tap.

Screw the cover plate over the valve and up to the wall, push the 'O' ring onto the splines, push on the control handle in a horizontal position and fix in place using the hexagonal key.

Screw on the spout up to the wall.

1. Fix the valve body into the wall with screws. Make sure the valve body is completely level.
2. Connect the hot and cold water inlets of the valve body to the main water supply.
3. Apply teflon tape to the threaded pipe and screw it into the valve outlet. Then, put rubber washer to the spout body and screw the spout body into the threaded pipe.
4. Fix the handle escutcheon onto the valve firmly against the finished wall. Install the handle to the valve, then tighten the set screw with Allen key and place the indication button on the handle.

## Flexible Connecting Hose

Care must be taken when connecting the flexible connection hose from the power supply box to the spout to ensure it does not bend sharply and kink or twist.

See above for recommended ways to fit the flexible connecting hose.

Important: Failure to follow these guidelines may result in poor performance and damage to the flexible connection hose.

## Cleaning & Maintenance

To keep the product clean and shiny follow the instruction below.

1. Flush with clean water and dry with soft cloth only.
2. Do not use any detergent, polisher, sane-cloth, or a scraper.
3. Do not use acid detergent.