

## FONTANA HAVANA WALL MOUNT FOLDING KITCHEN SINK FAUCET INSTALLATION INSTRUCTIONS



### PRIOR TO INSTALLATION

Please read installation instructions below. All plumbing should be installed in accordance with applicable building codes and regulations.

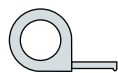
Unpack and inspect the items for any shipping damages. If you find damages, do not install.

All products must be installed by a professional and certified plumber otherwise warranty may be voided.

### POSSIBLE TOOLS REQUIRED\*



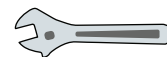
Plumbers Tape



Tape Measure



Level



Adjustable Wrench



Hex Wrench



Thread Sealant



Drill



Pencil or Marker



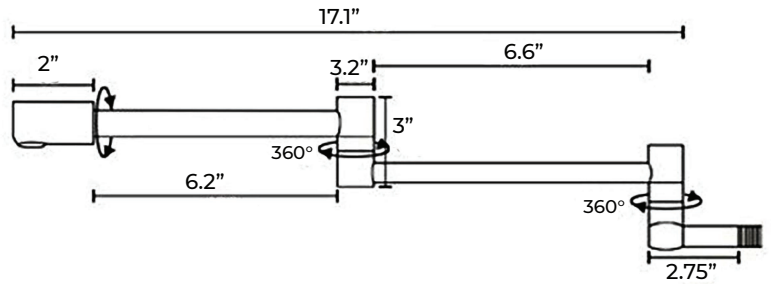
Screwdriver

\*not included

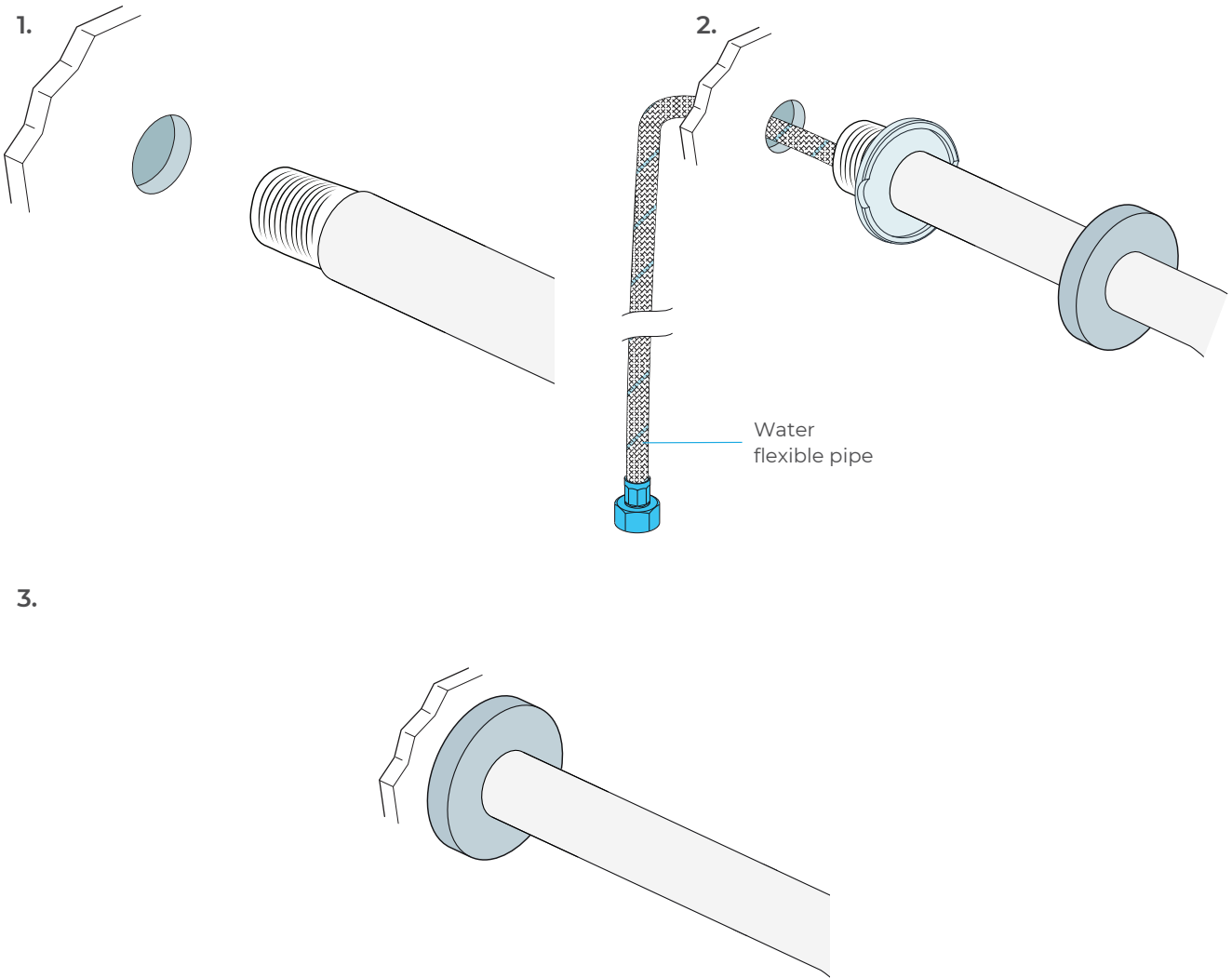
## Technical Information

Style: Single Holder Single Hole  
 Valve Core Material: Ceramic  
 Number of Handles: Single Handle  
 Rotate Faucet: 360 degree rotate faucet  
 Style: Kitchen Faucet  
 Material: Solid Brass  
 Finish: Oil Rubbed Bronze  
 Connection: G1/2  
 Flow type: Adjustable

## Faucet Size

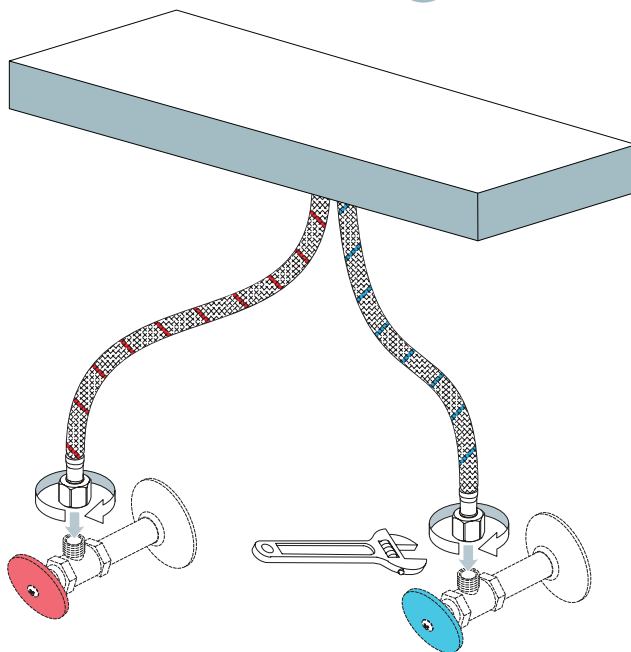


## Faucet Wall Mount Installation



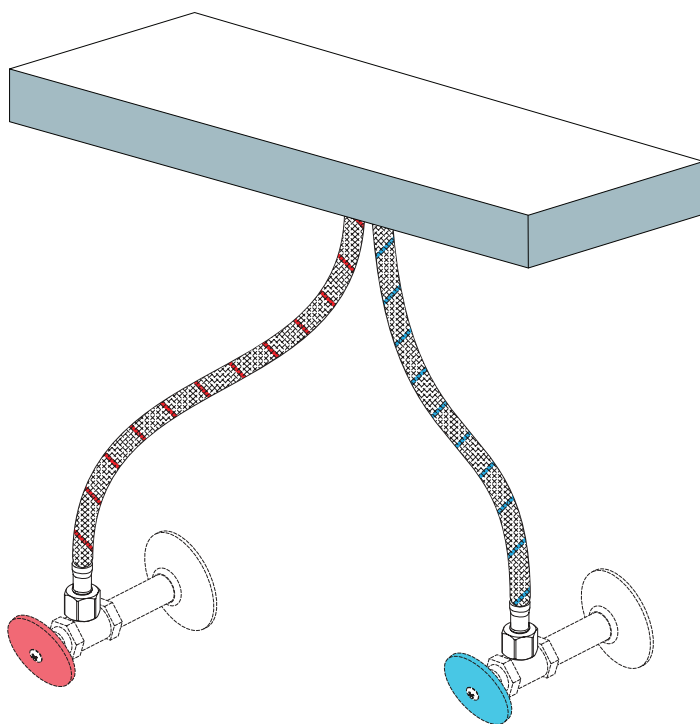
All dimensions and specifications are nominal and may vary. Use actual products for accuracy in critical situations.

Wall Mount  
Faucet



**Step 4 :** Connect waterlines to angle stops. Turn on the angle stops and check for leaks (DO NOT TURN FAUCET ON).

Wall Mount  
Faucet



**Step 5 :** Turn Faucet On For 1 minute to Flush any debris.