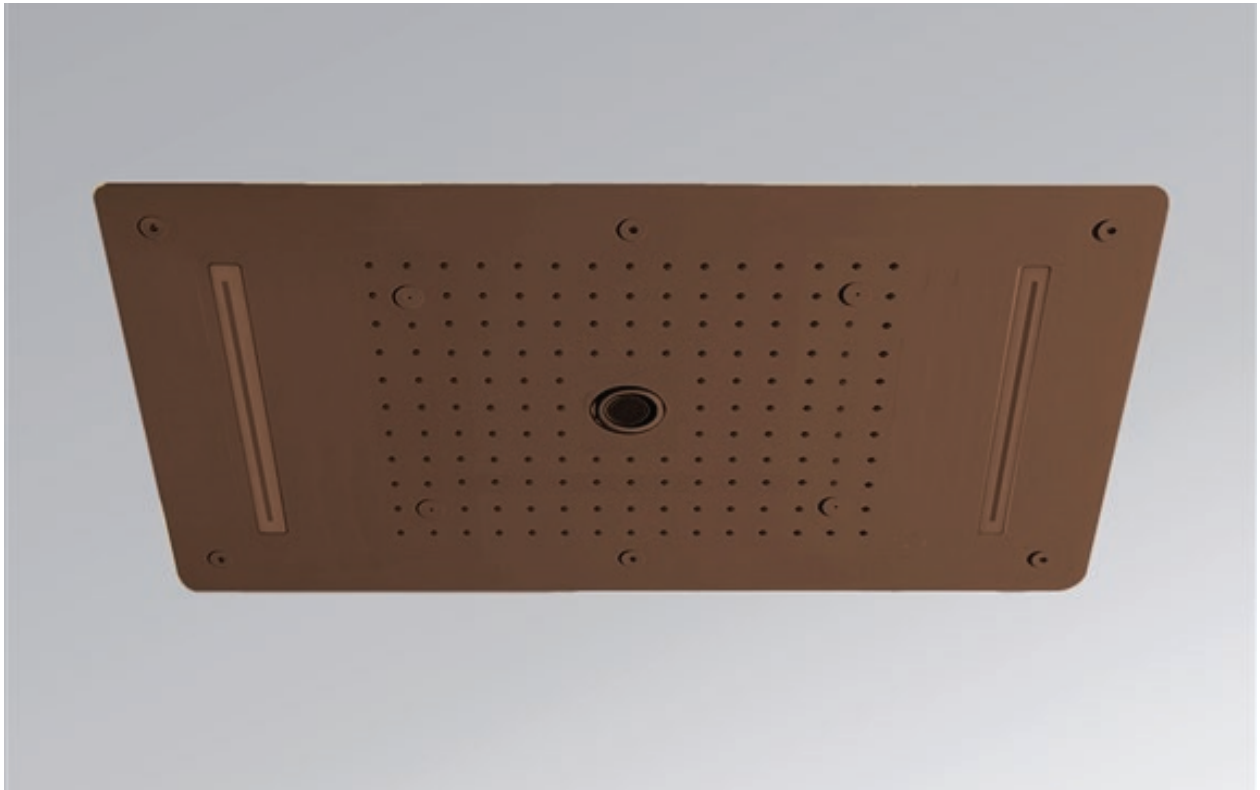


MULTI-FUNCTION RECESSED SHOWER SYSTEM INSTALLATION INSTRUCTIONS



PRIOR TO INSTALLATION

Please read installation instructions below. All plumbing should be installed in accordance with applicable building codes and regulations.

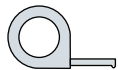
Unpack and inspect the items for any shipping damages. If you find damages, do not install.

All products must be installed by a professional and certified plumber otherwise warranty may be voided.

POSSIBLE TOOLS REQUIRED*



Plumbers Tape



Tape Measure



Level



Adjustable Wrench



Hex Wrench



Thread Sealant



Drill

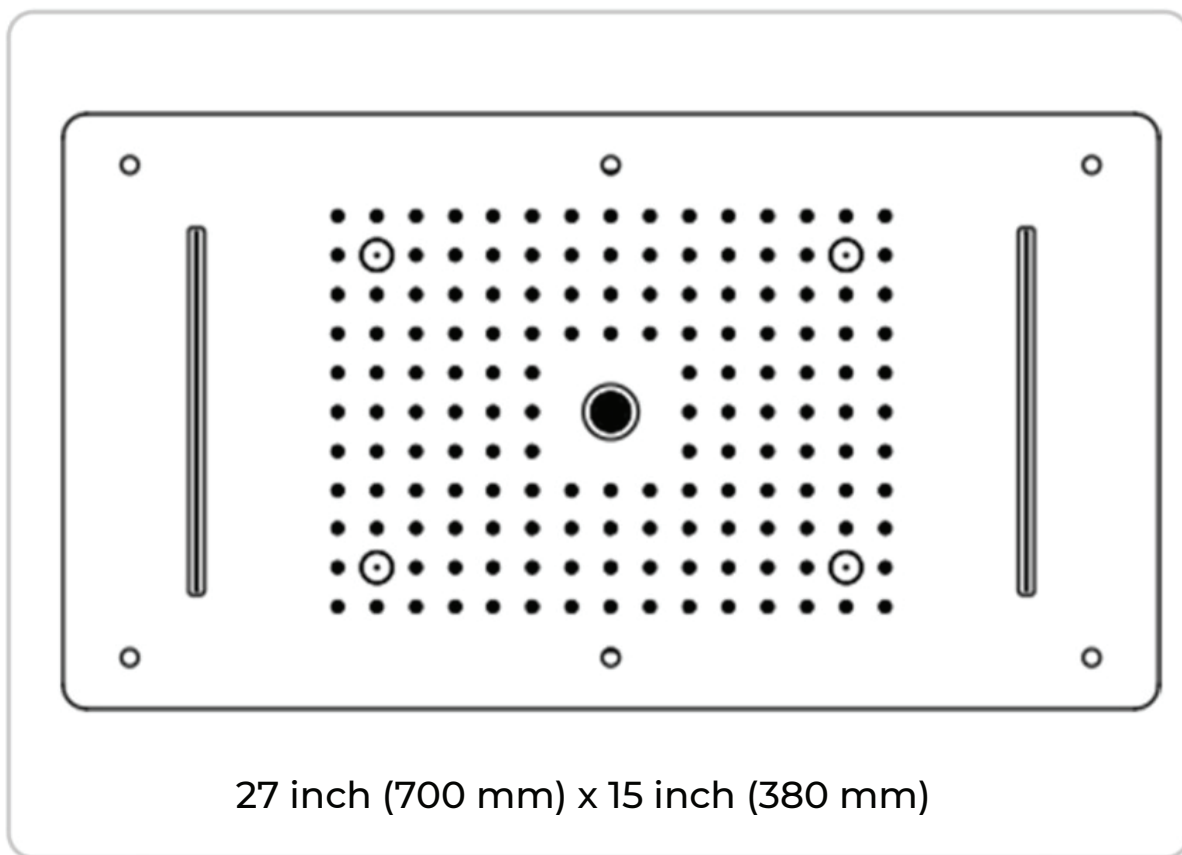


Pencil or Marker

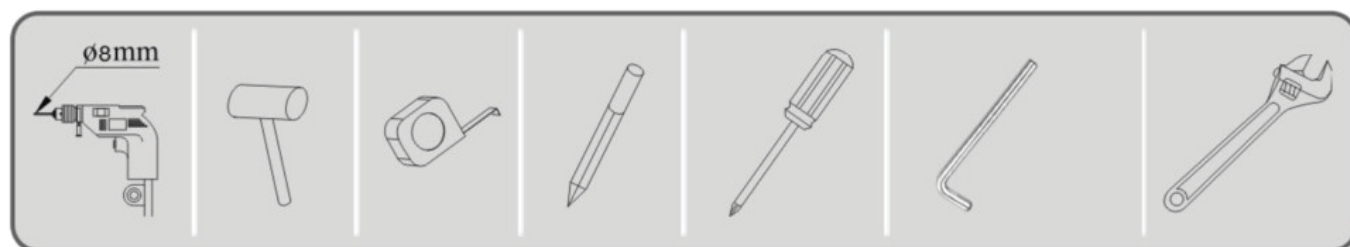
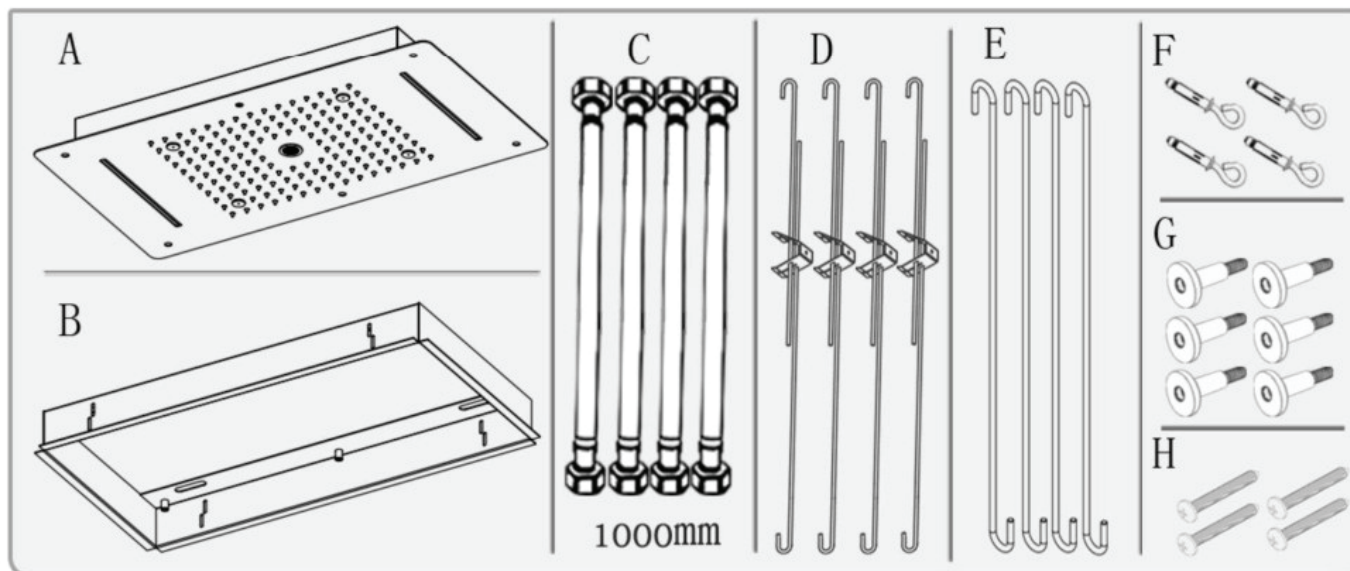


Screwdriver

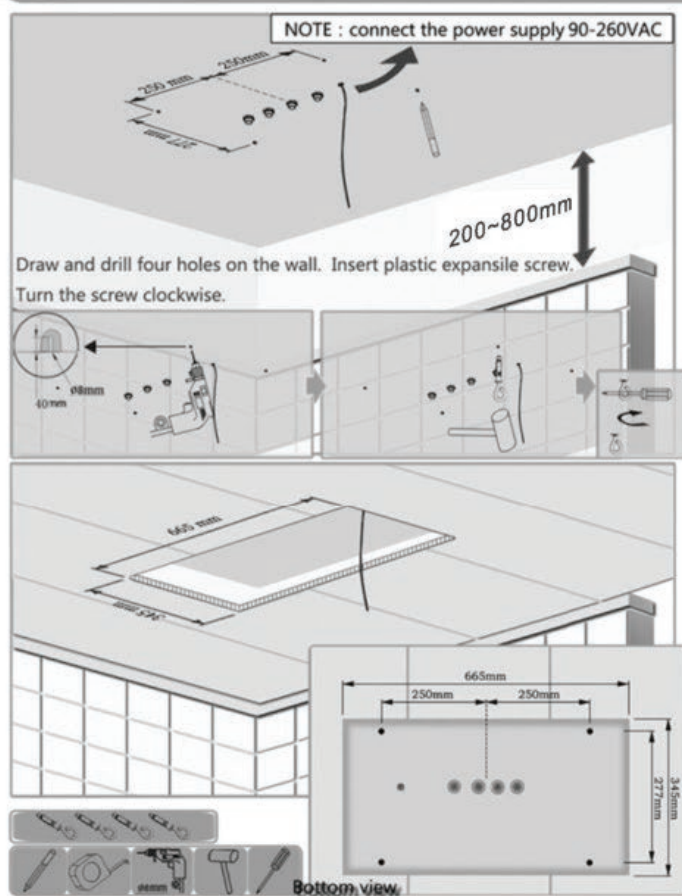
*not included



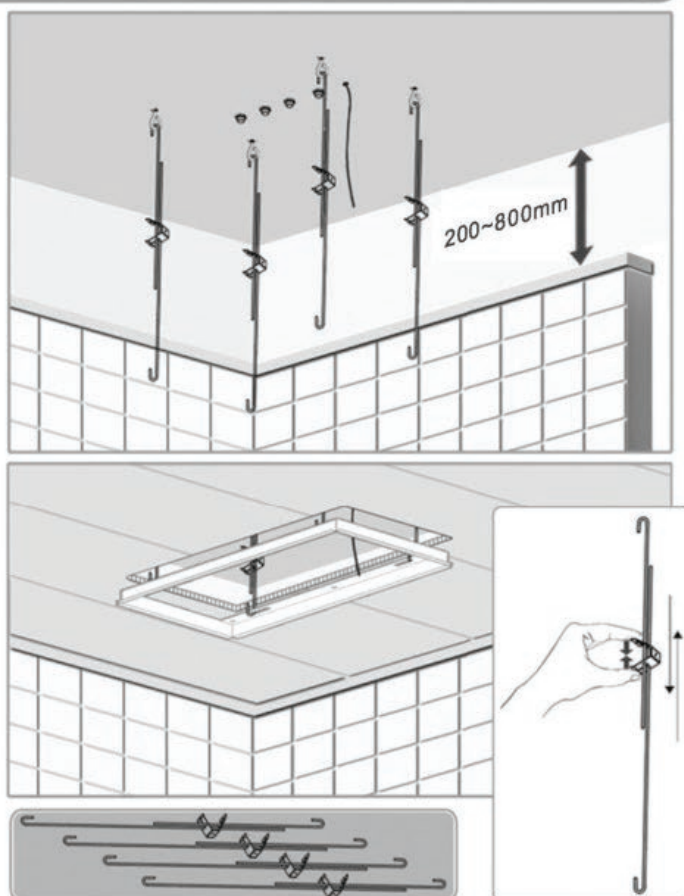
Before installing , to take out six screws "G" from the plate of shower head , separate shower hold "B" from shower head



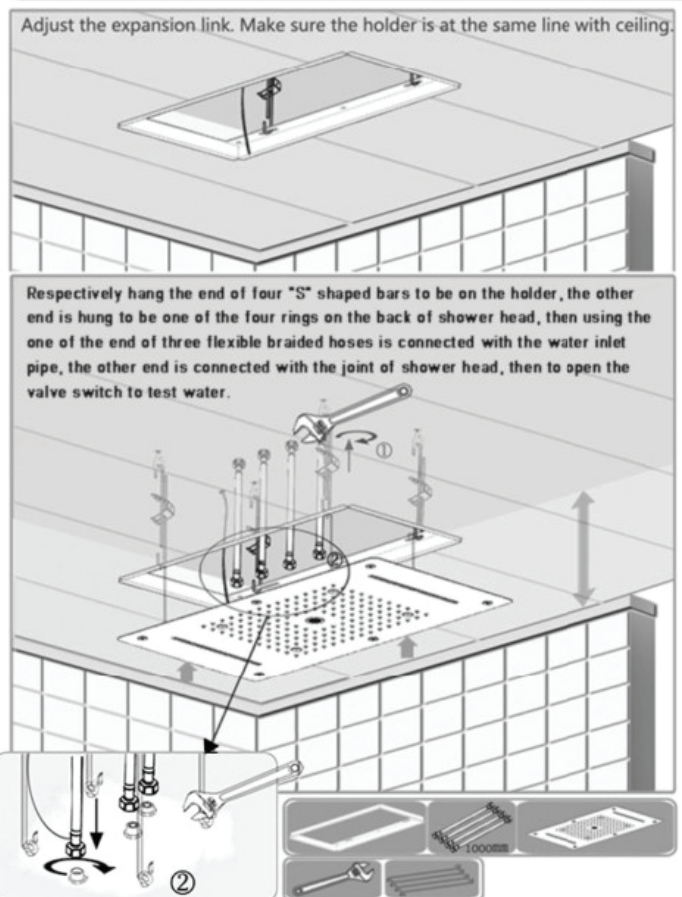
1



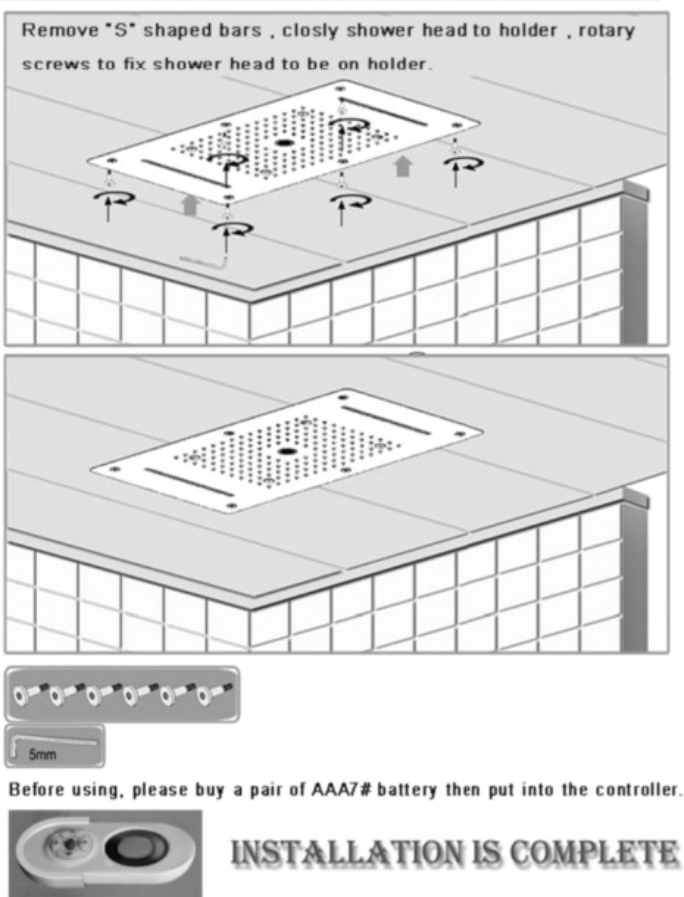
2



3

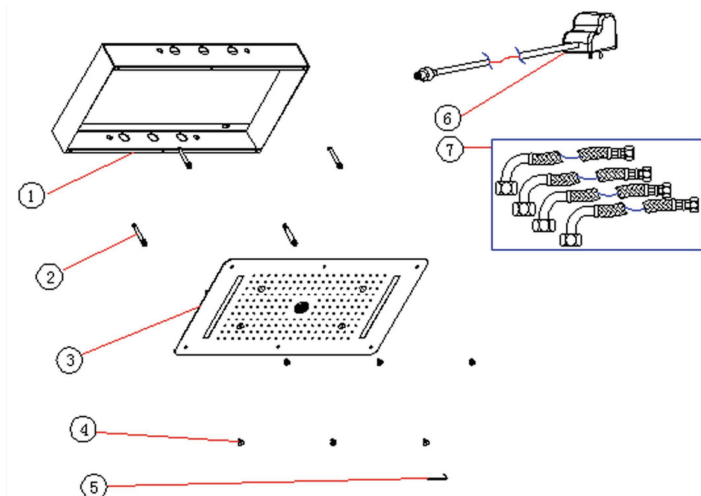


4

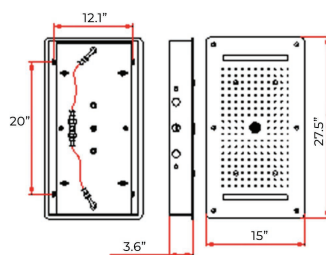


Shower Installations Instruction

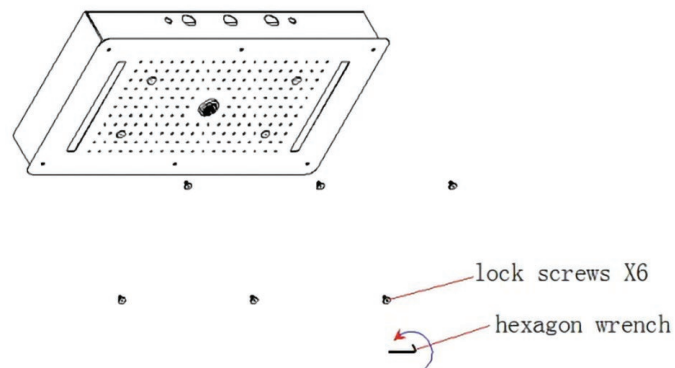
Step 1:



Number	Commodity	Quantity
1	Bracket	1
2	M10 Expansion Screws	4
3	Shower Assembly	1
4	Lock Screws	4
5	Hexagon Wrench	1
6	Power	1
7	Water Inlet Connecting Pipe	4

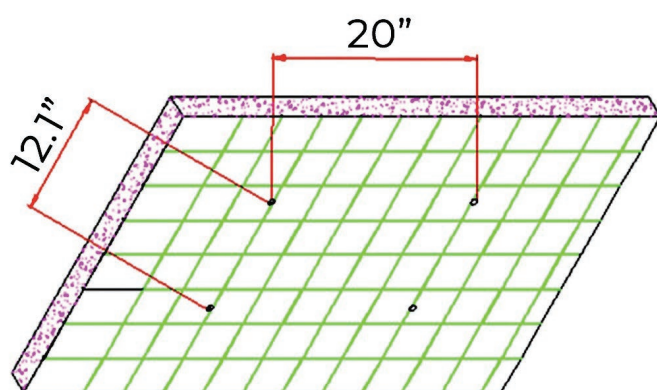


Step 2:



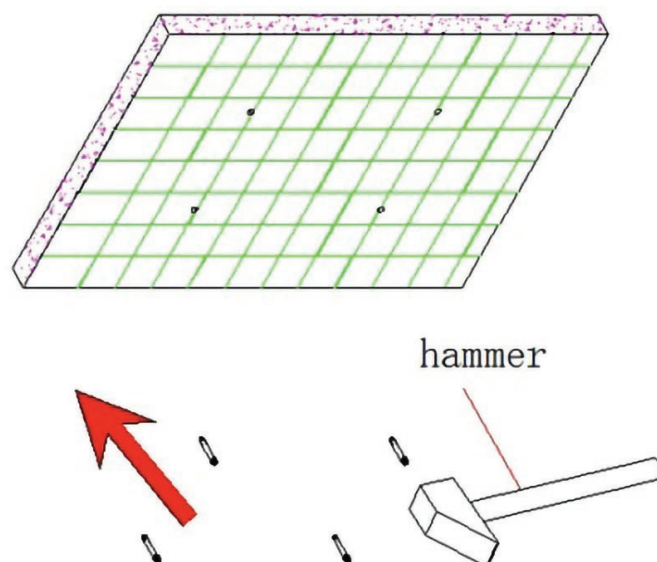
Use a hexagon wrench to lose the lock screws then separate the showerhead assembly and bracket.

Step 3:



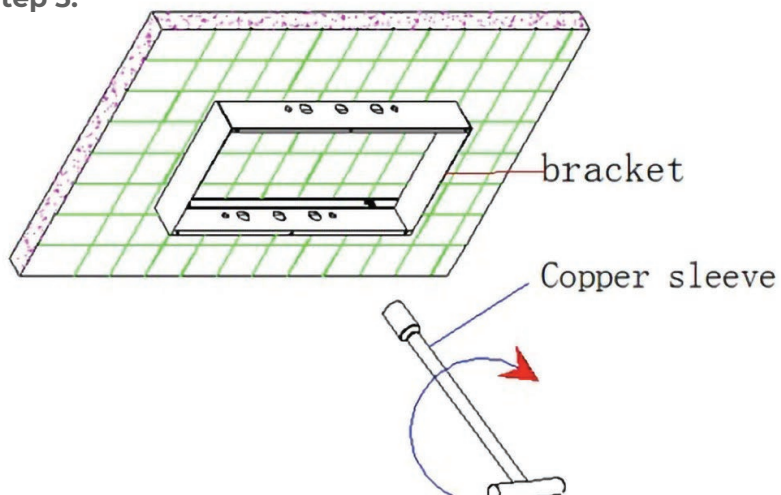
Dig 4 Ø10 holes on the ceiling according to the dimension of the screws.

Step 4:



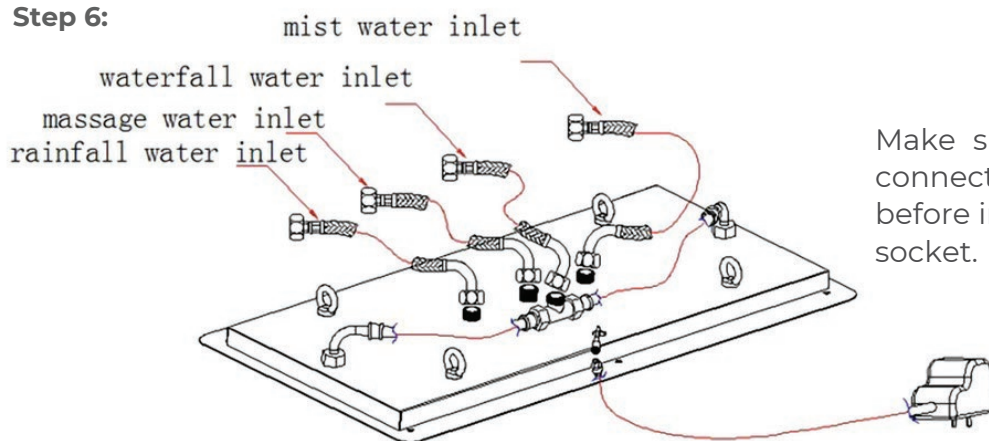
Use a hammer to thwack the 4 screws into 4 holes.

Step 5:



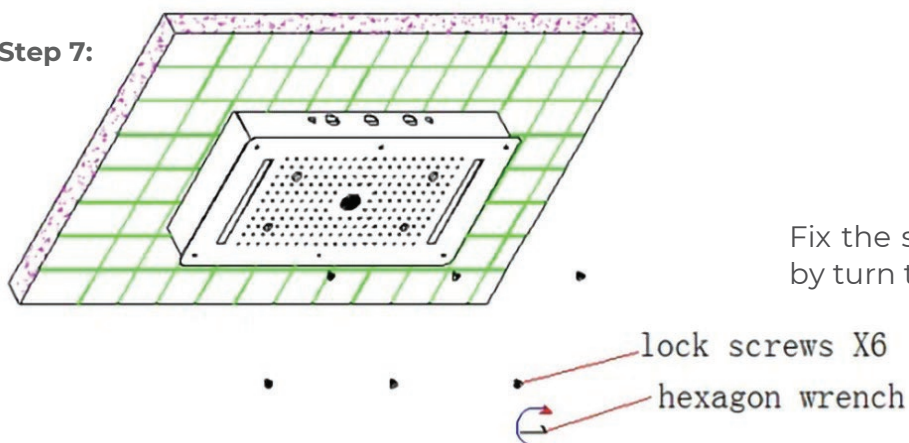
Install the bracket on the expansion screws then use copper sleeve wrench to lock 4 screws.

Step 6:



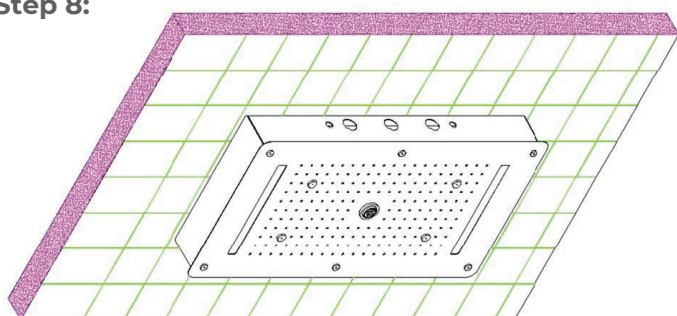
Make sure all the water inlet pipe connected well without leaking before insert the power plug into the socket.

Step 7:



Fix the shower assembly on the bracket by turn the locking bolt.

Step 8:



Installation complete

General Information

All products manufactured and supplied by Fontana are safe and comply to legislative requirements. Providing they are installed correctly and receive regular maintenance in accordance with these instructions your user experience will not be affected.

Care & Cleaning

1. The product can be cleaned with warm water, a mild soap and a clean soft cloth.
2. Clean progressively and gently.
3. It is not required to use any abrasive cleaning pads, wire wool or cloths to clean the product.
4. Avoid a vigorous cleaning action, as this could contribute to denaturing and dulling
5. Abrasive or strong cleaning products containing ammonia, bleaches, alcohol, dyes, acids (hydrochloric, formic, phosphorus, chlorine or acetic) will be not be affected.
6. If using a spray cleaner, apply the cleaning agent onto a soft cloth, never directly spray onto the product as the cleaner may enter gaps and openings and cause damage. Do not allow the cleaner to remain on the product for a period of time. After cleaning, rinse thoroughly with clean water.

