

FONTANA MILAN SILVER GRAY WALL MOUNT DOUBLE CHAMBER MANUAL LIQUID HAND SOAP DISPENSER INSTALLATION INSTRUCTIONS



PRIOR TO INSTALLATION

Please read installation instructions below. All plumbing should be installed in accordance with applicable building codes and regulations.

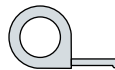
Unpack and inspect the items for any shipping damages. If you find damages, do not install.

All products must be installed by a professional and certified plumber otherwise warranty may be voided.

POSSIBLE TOOLS REQUIRED*



Plumbers Tape



Tape Measure



Level



Adjustable Wrench



Hex Wrench



Thread Sealant



Drill



Pencil or Marker



Screwdriver

*not included

Technical Information

Material: ABS

Soap Dispenser Item

Size: 138*70*220 mm

Installation: Wall-mounted

Capacity: 300ml for each bottle

Features:

* Durable new ABS plastic material. No smell !!

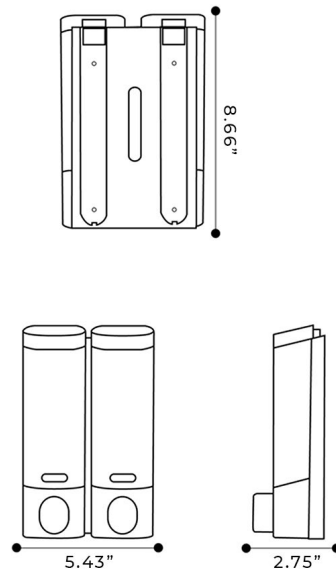
Healthy plastic !!

* Use Key to open the dispenser, to avoid random opening

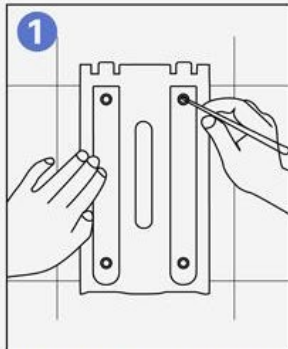
* Suitable for various places: Bathroom, Kitchen, Hotel, Restaurant etc.

* Transparent bottle body: beautiful and you can check liquid using

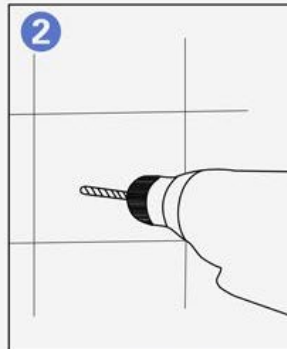
Faucet Size



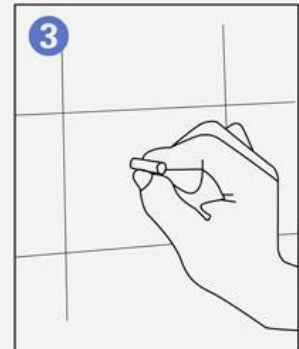
Installation Instructions



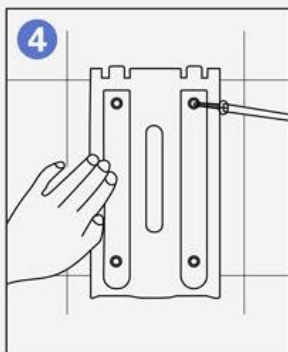
1. Mark the appropriate drilling position



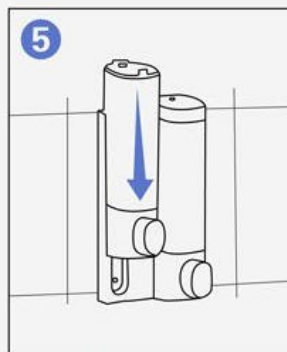
2. Punch mark position



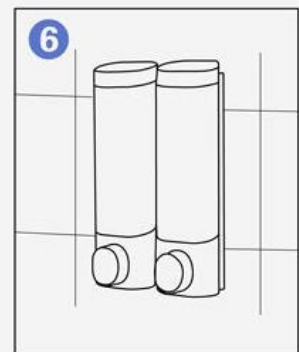
3. Load screw anchors



4. Mount the screws to fix the back panel



5. Install bottles



6. Fill liquid soap and lock the lid to use

All dimensions and specifications are nominal and may vary. Use actual products for accuracy in critical situations.

Fontana Showers®

1 Use key to open the cover



2 Press the buckle



4 Then you take apart the soap dispenser



3 Press the buckle and remove the bottle

